

# POWER-XTRA

Model : Power-Xtra PX-CR2032-1H06 3V Lithium Battery

Ver:A0

NO:

---

## PX-CR2032-1H06 Battery Spec

**Model :** PX-CR2032-1H06

**Customer Code:** C10025

**Customer P/N:**

**Cell Type :** CR2032

**Nominal Voltage:** 3.0V

**Capacity:** 210mAh

Draft	Checking	Approved	Customer Confirmation
Peter	Chun Qi Zeng		

# POWER-XTRA

Model : Power-Xtra PX-CR2032-1H06 3V Lithium Battery

Ver:A0

NO:

## 1. Basic Information

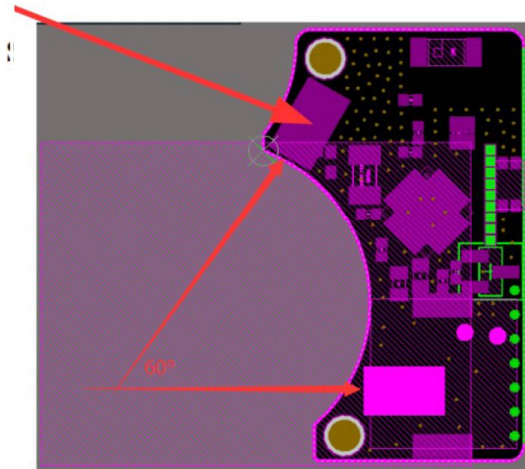
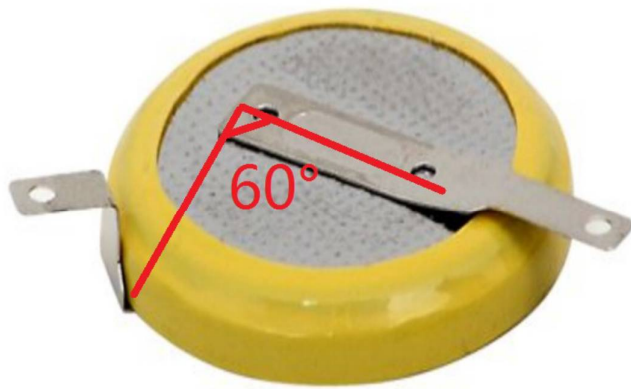
Cell Type: CR2032 (Made in China)  
Cell configuration: 1P1S  
Voltage Nominal: 3.0V  
Capacity Nominal: 210mAh(Discharge load 7.5kΩ, Temperature 20±2°C.)

## 2. Mechanical Drawings

### 4.1. Sample Picture

T.B.D.

### 4.2. Drawing of Outline



注意焊脚为 60 度

Battery cell/	CR2032
PVC /color	Yellow
Weld spot	2 spots per pole
Thickness of tab	Existing
Inner packing	B: Sealed thermal shrinkage; Each box labeled quantity

# POWER-XTRA

Model : Power-Xtra PX-CR2032-1H06 3V Lithium Battery

Ver:A0

NO:

## 4.3. Packing

托盘整齐摆放，加纸板吸塑（B包装），每箱不超 10KG，客户定制 Logo 外箱；外箱 Logo 内容格式如下：

# POWER-XTRA

侧唛：

条形码格式为：GS1(EAN.UCC)/ENA-13 Bar code，侧唛分别贴于纸箱两侧（尺寸视纸箱尺寸更改），内容及格式如下：

<b>PO NO.</b>	<b>Order 16-8</b>	← 根据每次订单更改
<b>MODEL NO.</b>		
<b>QTY</b>	<b>500PCS</b>	← 根据每箱数量更改
<b>DATE</b>	<b>YYYY-MM-DD</b>	← 根据出货日期更改
<b>Made in China</b>		