

power-xtra

Model: Power-Xtra - 1S - 3.2V 3A LiFePO4 BMS - with 10K NTC and Nickel Steel

Stock Code: 900.600.501.243

TECHICAL INFORMATIONS

Item No	Specs / Details		Criteria / Parameters
1	Model	1S - 3.2V 3A LiFePO4 BMS	1S-3A working current
2	Voltage	Charging voltage	DC:3.65V CC/CV
3	Current	Maximal continuous charging current	3A
		Maximal continuous discharging current	3A
		Current consumption	$\leq 20\mu\text{A}$
4	Overcharge Protection	Over charge detection voltage	$3.65\pm 0.025\text{V}$
		Over charge detection delay time	80ms (MAX)
		Over charge release voltage	$3.50\pm 0.05\text{V}$
5	Over Discharge Protection	Over discharge detection voltage	$2.55\text{V}\pm 0.1\text{V}$
		Over discharge detection delay time	40ms (MAX)
		Over discharge release voltage	$2.95\text{V}\pm 0.1\text{V}$
6	Over Current Protection	Over current detection voltage	$150\pm 30\text{mV}$
		Over current detection current	6A-6.5A
		Detection delay time	10ms (MAX)
		Release condition	Cut load,Auto recovery
7	Short Circuit Protection	Detection condition	Exterior shot circuit
		Detection delay time	200~500uS
		Release condition	Cut load or Charging Activation
8	Balance	Balance voltage for single cell	-
		Balance current for single cell	-
9	Resistance	Inner resistance	$\leq 60\text{m}\Omega$
10	Temperature	Operating temperature range	-20 ~ +70°C
		Storage Temperature Range	-20 ~ +85°C

power-xtra

Model: Power-Xtra - 1S - 3.2V 3A LiFePO4 BMS - with 10K NTC and Nickel Steel

Stock Code: 900.600.501.243

IMAGE / TECHNICAL DRAWING

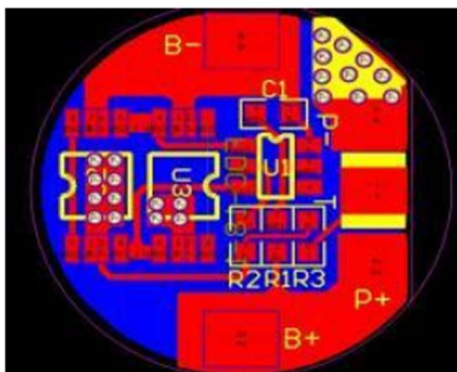
Dimension

Length	17,5mm
Width	17,5mm
Thickness	0.6mm
Nickel	B+(28mm)B-
Steel	(83mm)/3mm/0.1mm

Port Description

- (1) B+ : Connect the positive pole of the battery
- (2) B- : Connect the negative pole of the battery
- (3) P+ : Connect the battery output terminal or the positive pole of the charger
- (4) P- : Connect the battery output terminal or the negative pole of the charger
- (5) T : NTC Connect the battery output terminal NTC

Top:



Bottom:

