

Technical Product Information

1. General

Battery with safety circuit and plastic housing
 Cell: LPP443441PN
 PCM: Yes
 NTC: $10\text{ k}\Omega \pm 3\%$; B-Value $3435\text{K} \pm 3\%$
 ID: $3.9\text{ k}\Omega \pm 1\%$
 Configuration: 1S
 Weight: appr. 14g

2. Electrical Specification

Rated Capacity: 570mAh min., 595mAh typical
 Nominal Voltage: 3.7V
 Watt-Hour Rating: 2.3Wh
 Charging Method: Constant Current + Constant Voltage
 Max. Charge Voltage [V]: $4.20(\pm 50\text{mV})$
 Max. Continuous Charge Current: 570mA
 Rec. Charge Cut Off: by current 12mA or timer 3h
 Max. Continuous Discharge Current: 1140mA
 Rec. Discharge Cut Off: 3V
 Internal Impedance: approx. $150\text{m}\Omega$
 Exp. Cycle Life: >500 cycles >70% of initial capacity

Cell Protection

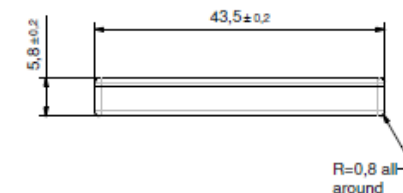
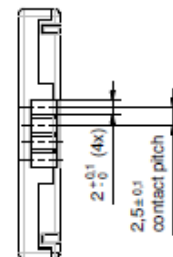
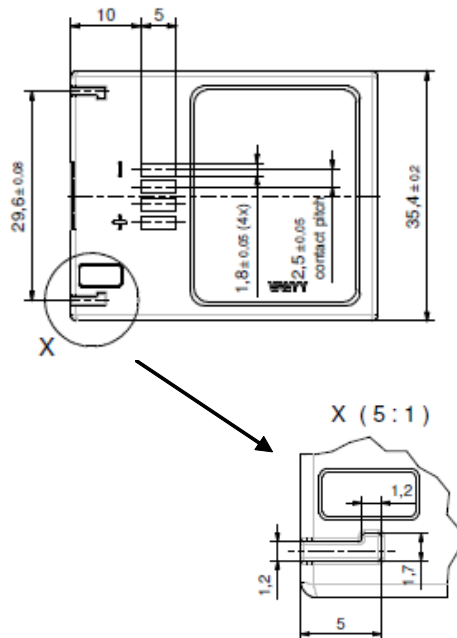
Overcharge Detection: $4.3 \pm 0.02\text{V}$
 (0.8 to 1.2sec. delay, resume $4.1\text{V} \pm 0.03\text{V}$)
 Overdischarge Detection: $2.40\text{V} \pm 0.035\text{V}$
 (76.8 to 115.2msec. delay, resume Remove load & charging current)
 Overcurrent Detection: 3.2A to 5.2A (9.6 to 14.4msec. delay)

3. Ambient Conditions

Temperature Range
 • Charge: 0 to $+45^\circ\text{C}$
 • Discharge: -20 to $+60^\circ\text{C}$
 • Storage: Less than 1 month at at -20 to $+45^\circ\text{C}$
 Less than 6 months at -20°C to $+35^\circ\text{C}$
 Humidity: $65 \pm 20\%\text{RH}$

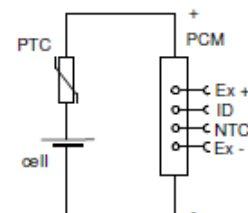
4. Environmental and Safety

Please follow VARTA Handling and Safety Precautions for Lilon & LiPolymer.
 The cell is approved according UL1642.
 This battery meets the requirements of Battery Directives and the battery parts are RoHS-Compliant.



WW - week two digits
 YY - year two digits

Protection Circuit Module



Minimum Packaging Unit: 150 pcs
 Product for OEM customers only!

1/LPP443441PN.PCM.PC
 EZPack S - VKB 56445 701 099

Product Information

